

# VDER Compensation

**Julia Castellanos, DER Program Manager**

**Central Hudson, Distributed Energy Resources**



# Phase 1 NEM (Net Energy Metering)

- ❖ Residential customers with 25 kw limitation on system size
- ❖ On-site demand metered customer below 750 kw system size.
- ❖ Residential Farm customers under 100 kw system size
- ❖ Annual output may not exceed 110% of customer's onsite usage.
- ❖ Compensation term length of 20 years.

Customers interconnected after January 1, 2020, extended to January 1, 2021.

- ❖ No annual reconciliation or payout of Bank
- ❖ Excess credits carried over to subsequent billing periods.
- ❖ Phase One NEM for on-site mass-market projects with the addition of the CBC demand billed customers.

# Customer Benefit Contribution(CBC)

The CBC applies to on-site generating Small Commercial projects and Residential customers that receive permission to operate or install equipment on or after January 1, 2022.

- ❖ Demand customers with a system size less than 25kw
- ❖ CBC charge is applicable to customers with on-site solar wind or micro hydro-electric resources, fuel cell, micro-CHP, and anaerobic digesters.
- ❖ CBC is a monthly fixed charge to fund Public Benefits Programs which include energy efficiency, low income and supply related clean energy programs.
- ❖ CBC is calculated based on DC system size in kilowatts, with a per kw-month rate.
- ❖ CBC rate calculated by Utility and updated each year.

# Value Stack

- ❖ Residential customers with over 25 kw system size.
- ❖ On-site demand metered customer over 750 kw system size.
- ❖ Demand metered customer with a system size below 750 kw but also estimated Generation Over 110% of the annual usage.
- ❖ Compensation term length of 25 years.
- ❖ Applies to all projects Remote Crediting and CDG. Phase 1 NEM can opt in but cannot opt back out

Value Stack Components – Can opt in to Phase 2 Value Stack Alt. 1-3 VDER:

[Energy Value \(LBMP\)](#)

[Capacity Value \(ICAP\)](#)

[Environmental Value \(E\)](#)

[Demand Reduction Value \(DRV\)](#)

[Locational System Relief Value \(LSRV\)](#)

[Market Transition Credit \(MTC\)](#)

# Remote Crediting (RC)

Existing RNM converted RC July 15, 2021, and New Interconnected projects compensated RC Value stack effective September 1, 2021.

- ❖ Value Stack compensation - without MTC
- ❖ The Remote Crediting Host **must** be a non-residential customer.
- ❖ The RC host **can** be a residential farm with qualifying electric generating equipment.
- ❖ The RC host **can** allocate credits to itself and subscribers.
- ❖ Remote crediting is based on an allocation request form. Can be submitted monthly.
- ❖ Excess credits on satellites are carried over to subsequent billing periods.
- ❖ Up to 10 Satellite customers (that can be residential or commercial)

Satellite customer can offtake unlimited amount of generated capacity.

Satellite customer can offtake from more than RC host.

Satellite customer cannot enroll in a CDG program or net metered or RNM.

# *Community Distributed Generation (CDG)*

- ❖ Non-residential CDG host with generating equipment based on monetary crediting for net hourly injections, and compensation based off value stack rate.
- ❖ A CDG sponsor will submit an Allocation form with the total percentage of hosts output assigned to subscribers monthly.
- ❖ One Anchor account (Satellite accounts with demand of 25 kw or greater cannot receive more than 40%)
- ❖ Minimum of 10 subscribers Each members total annual credits must amount to a minimum of 1,000 kwh annually.
- ❖ Excess credits will be carried forward to the succeeding bill period. 2-year period.
- ❖ Subscribers opt in (Enroll/dis-enroll) the CDG sponsor can submit monthly allocation forms(or modify %)



# Net Crediting

- ❖ Compensation methodology under value stack rate follows traditional CDG.  
CDG Net Crediting Program enrollment requires
- ❖ Prior to commencing contractual agreement, all registrations, forms and elections are submitted.
- ❖ Election of a minimum savings rate 5% (the determination of the CDG subscription fee)  
Applied equally to all subscribers except the Anchor account.
  
- ❖ Consolidated bill to subscriber customer, reduces need for 2 bills from Utility & host.
- ❖ Subscribers receive credit and debit from utility (one bill)
- ❖ Utility makes payment to CDG Sponsor (host)
- ❖ Guaranteed Savings. Fully Automated.
- ❖ Utility now takes the risk for non-payment from subscribers.
- ❖ Eliminates customer submit banking info to third parties or CDG host.

# Net Crediting

Central Hudson Website Enrollment

<https://www.cenhud.com/my-energy/distributed-generation/programs-and-incentives/>

Programs and Incentives x +

cenhud.com/my-energy/distributed-generation/programs-and-incentives/

## Community Distributed Generation(CDG)

Learn about Central Hudson's Community Distributed Generation Program [here](#) or to log on to the [Clean Energy Marketplace](#) and subscribe to a share of a local solar farm.

### CDG Allocation Request Form

This form is for use in connection with Central Hudson's Community Distributed Generation Program as contained in General Information Section 46 of P.S.C. No. 15 – Electricity ("Tariff"). Please fill in all of the required fields on the following form, sign and mail them to the address located at the bottom of page. [CDG Allocation Request Form](#)

### CDG Host Allocation Review and Approval

This document, which was developed and approved by the CDG Billing and Crediting Working Group, provides guidance on timelines for CDG Host Allocation Review and Approval for an initial CDG Allocation Request and modifications to a previously approved form. [CDG Host Allocation Review and Approval Guidance Document](#)

### CDG Self-Certification

Prior to commencing net metered service under CDG (and annually thereafter), CDG Hosts must self-certify in writing that they will abide by all terms and conditions of General Information Section 46 – Community Distributed Generation of P.S.C. No. 15 – Electricity and the requirements of the PSC that are adopted pursuant to orders issued in Case 15-E-0082 and Case 15-M-0180, as they may be amended or superseded time to time. [Here is an "example form"](#) that may be used to fulfill this self-certification requirement.

[Net Crediting Agreement](#)

[Central Hudson Net Crediting Manual](#)



# CDG Subscription Site

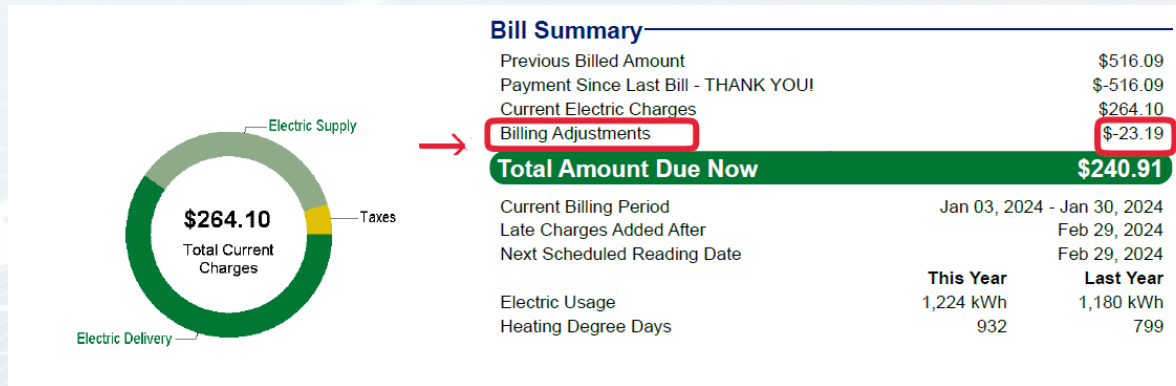
<https://cleanenergymarket.cenhud.com/>

The screenshot shows a web browser window displaying the EnergySage Community Solar website. The page is titled "Search Projects" and shows results for projects near zip code 12603. The utility is set to "Central Hudson". The results are displayed in a grid of project cards. Each card includes a project name, location, estimated annual savings, and a "GET STARTED" button. The projects are:

- Bogart Solar**: Catskill, NY. Estimated Annual Savings: \$135. Status: Almost Full. Provider: Ampion Energy (4 Reviews).
- Reisender Solar**: Ellenville, NY. Estimated Annual Savings: \$135. Status: Filling Up Fast. Provider: Ampion Energy (4 Reviews).
- Myer Solar Farms**: Wappingers Falls, NY. Estimated Annual Savings: \$135. Status: Filling Up Fast. Provider: Common Energy (1 Review).
- Subscribing**: Two projects are shown with "Subscribing" status.
- Sold Out**: One project is shown with "Sold Out" status.

# Net Crediting

customers bill  
Example

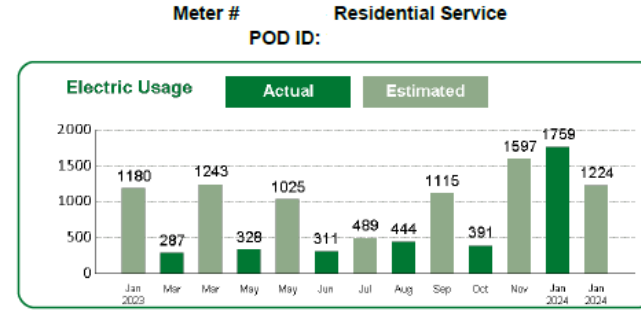


## Bill Summary

Previous Billed Amount	\$516.09
Payment Since Last Bill - THANK YOU!	\$-516.09
Current Electric Charges	\$264.10
<b>Billing Adjustments</b>	<b>\$-23.19</b>

**Total Amount Due Now \$240.91**

Current Billing Period	Jan 03, 2024 - Jan 30, 2024
Late Charges Added After	Feb 29, 2024
Next Scheduled Reading Date	Feb 29, 2024
	<b>This Year</b> <b>Last Year</b>
Electric Usage	1,224 kWh      1,180 kWh
Heating Degree Days	932              799



**Electric Service Charges 1,224 kWh at a cost of \$264.10**  
Average Daily Cost for Electric \$9.4321

<b>Amount of Electricity Used</b>		
01/30/2024	Present Reading (estimated)	81094
01/03/2024	Previous Reading (actual)	79870

**Electricity Used (kWh) 1224**

**Cost for Electricity Used (for 1.0 months)**

### ENERGY DELIVERY CHARGES:

Basic Service Charge	1.0 Mos. @	19.50000	19.50
Delivery Svc Chg	1224 kWh @	0.10547	129.09
MFC Admin Chg	1224 kWh @	0.00142	1.74
Transition Adj	1224 kWh @	0.00010	0.12
Bill Credit	1224 kWh @	-0.00676	-8.27
SBC/RPS Chgs	1224 kWh @	0.00866	10.60
Misc. Charges	1224 kWh @	0.00843	10.32
RDM Chg	1224 kWh @	0.00006	0.07
<b>Total Delivery Charges</b>			<b>163.17</b>

### ENERGY SUPPLY CHARGES:

(You may choose another supplier for this part of your service)

MFC Supply Chg	1224 kWh @	0.00337	4.13
Market Price	1224 kWh @	0.07641	93.53
Market Price Adj	1224 kWh @	-0.00075	-0.92
<b>Total Supply Charges</b>			<b>96.74</b>
NYS & Local Taxes			4.19

**TOTAL ELECTRICITY COST \$264.10**

For this billing period, the average cost of energy we purchased for you was \$0.07904 per kWh (excluding taxes). You can use this number to compare our price to other suppliers' prices.

## Payments and Adjustments

CDG Subscription Dr	02/02/2024	\$208.72
Community Distrib Generation Cr	02/02/2024	\$-231.91
Payment Received	01/30/2024	\$-516.09

# Phase One NEM

# Example

Customers bill

Please return this stub and make checks payable to Central Hudson

Account Number

Amount Due Now

**\$187.19**

Late Charges Added After

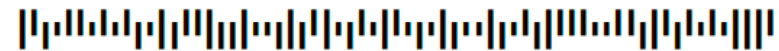
02/14/2024

**NET-METERED ACCOUNT STATUS**  
**CURRENT NET GENERATION 0 KWH|REMAINING BALANCE 1645 KWH**

\$

*Amount Enclosed*

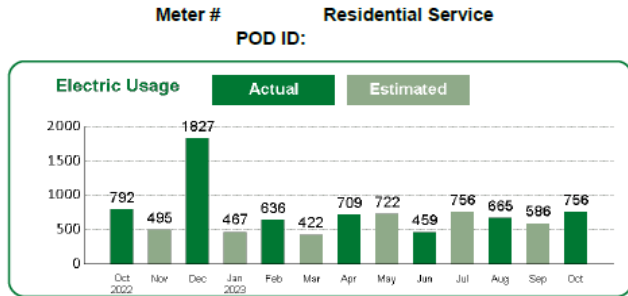
To contribute to the Good Neighbor Fund  
add a whole dollar amount, \$1 to \$10.



Central Hudson Gas & Electric Corporation  
284 South Avenue  
Poughkeepsie, NY 12601-4839

# CDG Example

Customers bill and customer's login to Central Hudson website



**Electric Delivery Charges 756 kWh at a cost of \$112.90**  
Average Daily Cost for Delivery \$3.8931

**Amount of Electricity Delivered**

10/21/2023	Present Reading (actual)	11907
09/23/2023	Previous Reading (estimated)	11151

**Electricity Used (kWh) 756**

**Cost for Electricity Delivered (for 1.0 months)**

Basic Service Charge	1.0 Mos. @	19.50000	19.50
Delivery Svc Chg	756 kWh @	0.10548	79.74
MFC Admin Chg	756 kWh @	0.00143	1.08
Transition Adj	756 kWh @	0.00011	0.08
Bill Credit	756 kWh @	-0.00675	-5.10
SBC/RPS Chgs	756 kWh @	0.00655	4.95
Misc. Charges	756 kWh @	0.01329	10.05
RDM Chg	756 kWh @	0.00007	0.05
NYS & Local Taxes			2.55

**Total Electric Delivery Charges: \$112.90**

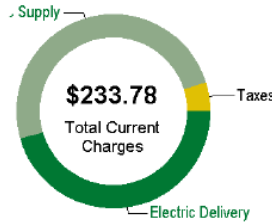
**Electric Supplier Info - RATE A122**  
ELECTRIC SUPPLY ACCOUNT NO: 34315151759017  
**Your Electric Supplier is INSPIRE ENERGY HOLDINGS, LLC**  
3402 PICO BLVD SUITE 300 SANTA MONICA CA 90405  
For electric supply pricing information, call 866-403-2620  
**Cost for Electricity Supply**  
Electric Supply Chg 756 kWh @ 0.15989 120.88  
**Total Electricity Supply Charges \$120.88**

Thank you for choosing Inspire's 100% clean energy plan! Your electricity use is matched with 100% clean energy. You're helping to create a greener future for our planet.

**Payments and Adjustments**

CENTRAL HUDSON		
Community Distrib Generation Cr	10/23/2023	\$-34.71
Consolidated Bill Credit	10/23/2023	\$-1.00
Payment Received	10/18/2023	\$-85.89
<b>Electric Supplier: INSPIRE ENERGY HOLDIN</b>		

Service For:



**Bill Summary**

	CENTRAL HUDSON	INSPIRE ENERGY HOLDINGS
Previous Billed Amount	\$85.89	\$130.04
Payments	\$-85.89	\$-130.04
Current Charges	\$112.90	\$120.88
Billing Adjustments	\$-35.71	\$0.00
Account Totals	\$77.19	\$120.88

**Total Amount Due Now \$198.07**

Current Billing Period	Sep 23, 2023 - Oct 21, 2023
Late Charges Added After	Nov 16, 2023
Next Scheduled Reading Date	Nov 21, 2023
Electric Usage	<b>This Year</b> 756 kWh / <b>Last Year</b> 792 kWh
Heating Degree Days	<b>This Year</b> 247 / <b>Last Year</b> 358

**Recent Account Activity**

Date	Type	Details	Status	Amount
11/16/2023	Payment	My Account Payment	Scheduled	-\$198.07
10/23/2023	Credit	CDG Credit		-\$34.71
10/23/2023	Bill	CDG Bill		\$17.25
10/18/2023	Payment	Incoming Payment	Applied	-\$215.93
09/22/2023	Credit	CDG Credit		-\$64.52
09/22/2023	Bill	CDG Bill		\$89.66
09/05/2023	Credit	CDG Credit		-\$57.96

[View More Activity](#)



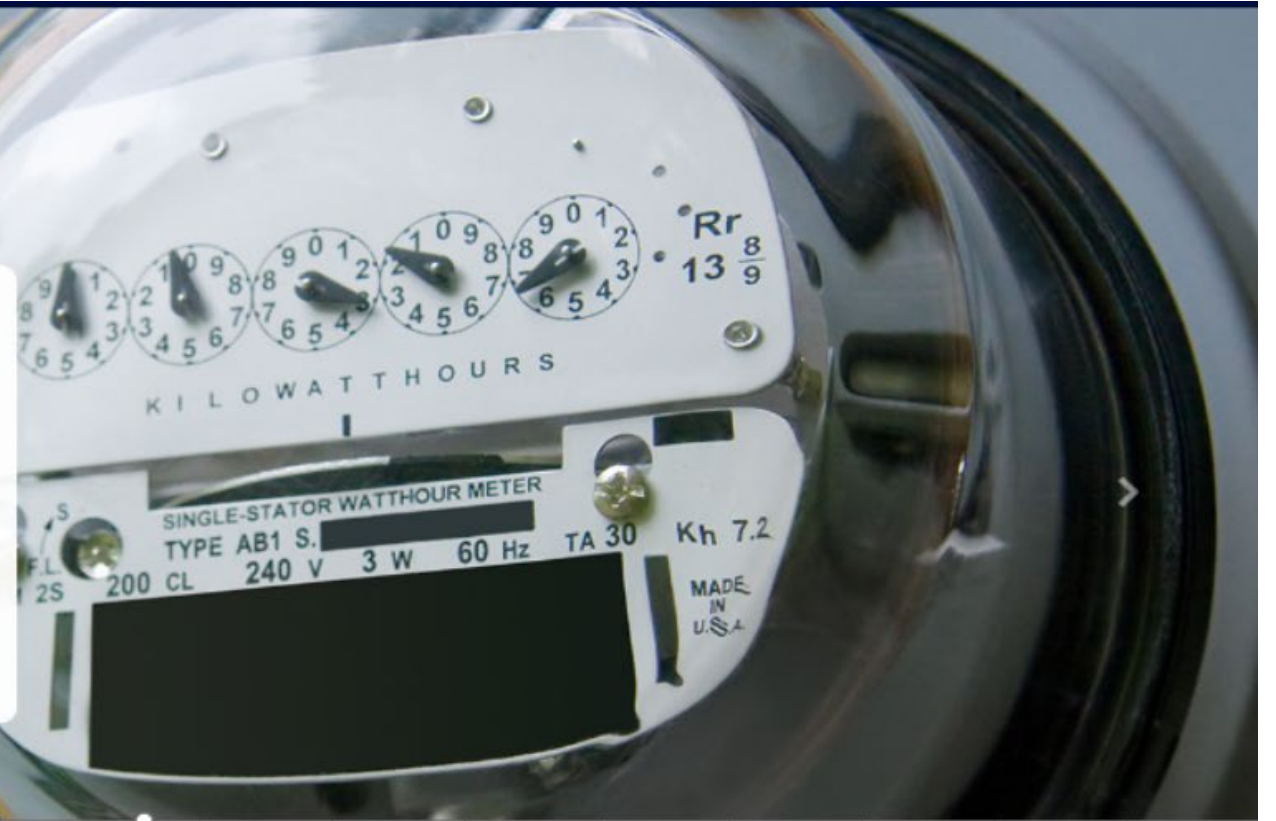


*Central Hudson is committed to continually improving our services to better meet our customer's needs.*

## We're Switching to Monthly Meter Reading

Phased transition away from estimated bills is underway, will be completed this year.

[Monthly Meter Reading Details](#)



People. Power. Possibilities.

**Central Hudson**  
A FORTIS COMPANY

