

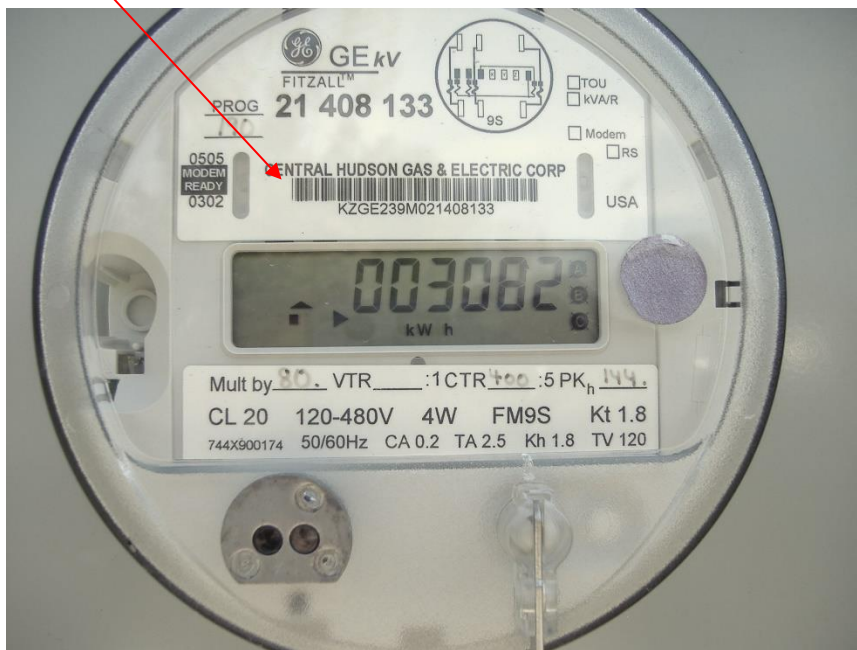
Reading Demand Meters

Meters that measure demand in kilowatts as well as usage in kilowatt hours are required for customer billed on a demand basis. Customers who are billed demand usage are billed monthly and, therefore, we read these meters monthly.

Although there are several types of demand meters, the information required from the meter to bill a customer is consistent for all demand meters. There are (3) readings needed to bill a demand customer:

1. *kWh*

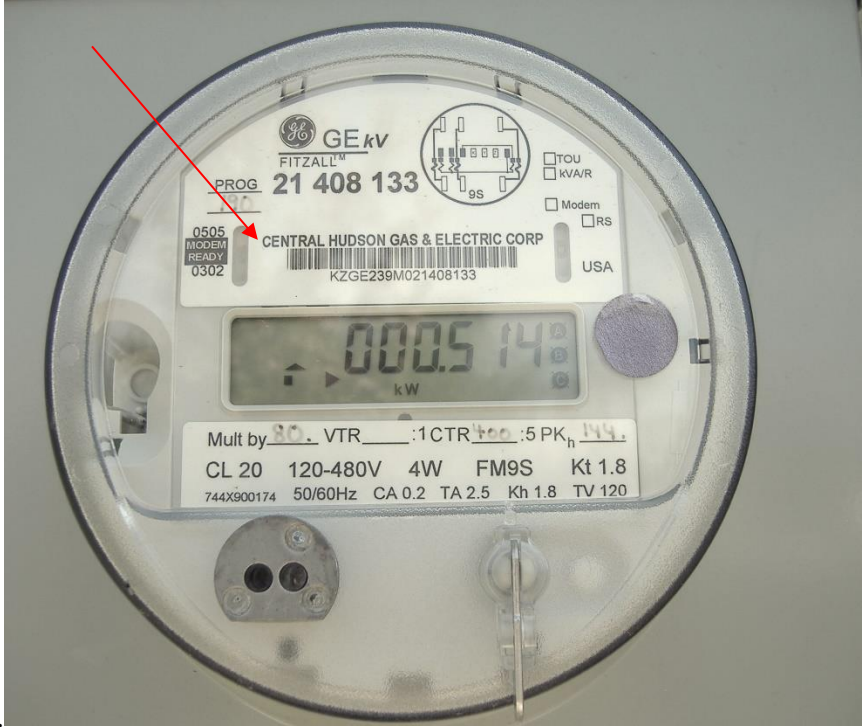
Kilowatt hours.



See kWh under the digital display

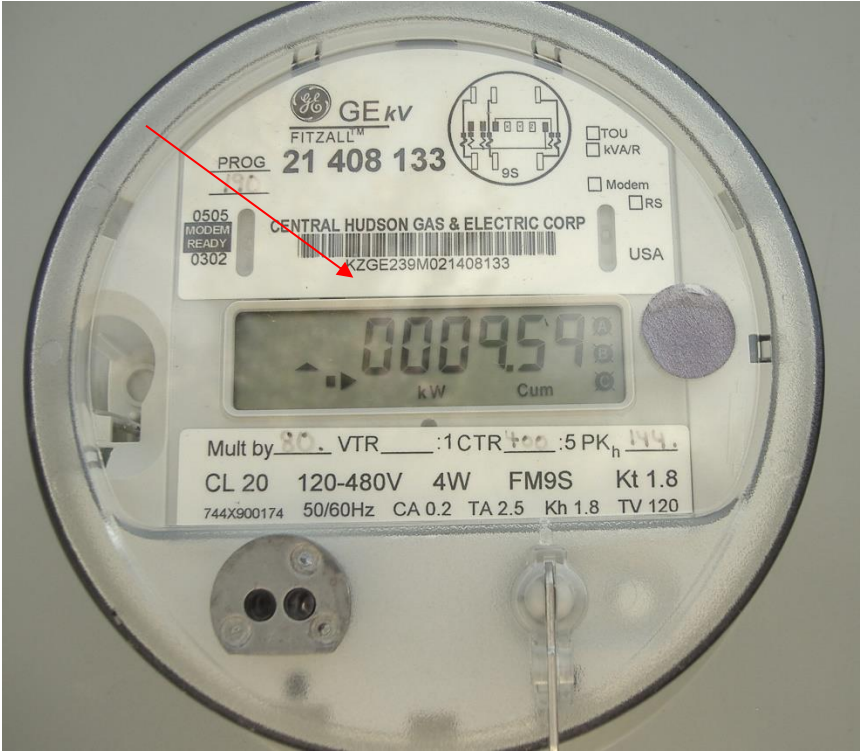
2. *kW (Max)*

Maximum kilowatts since the meter was reset last.



See kW under the digital display

3. Cum (AF & AL) Cumulative total of all the demands that have been registered.



See Cum under digital display

You will need to jot down these readings.

Next, see the metal clip on bottom right of meter face; pull it up and press it in until the screen shows all eights (“8888888”).

The meter will then run through the cycle again; jot down kilowatt hours, kilowatts and cumulative numbers again. Two of the numbers will be the same, one will be different.