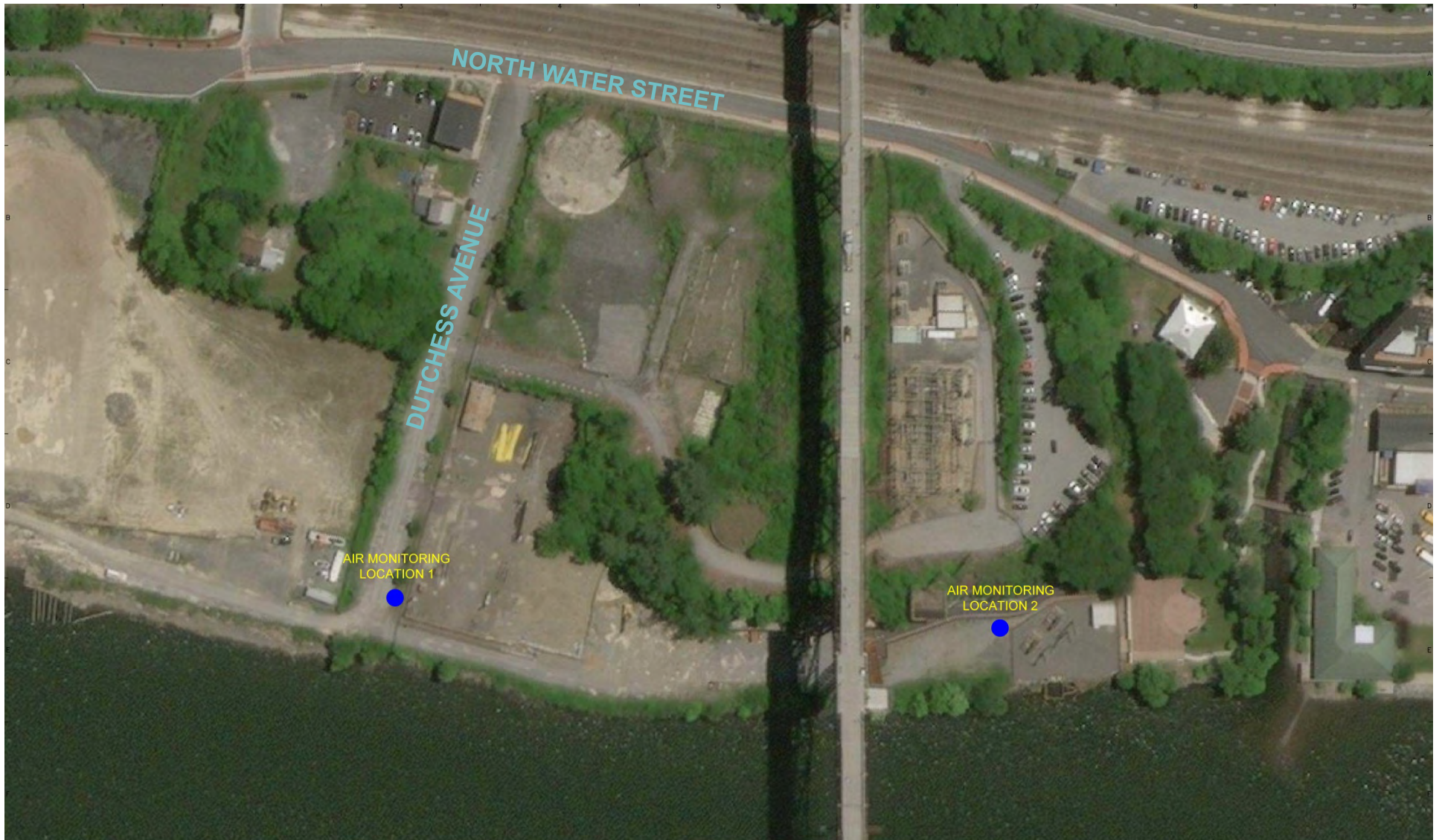


Former North Water Street MGPSite  
Remediation  
Public Availability Session  
Slides and Materials

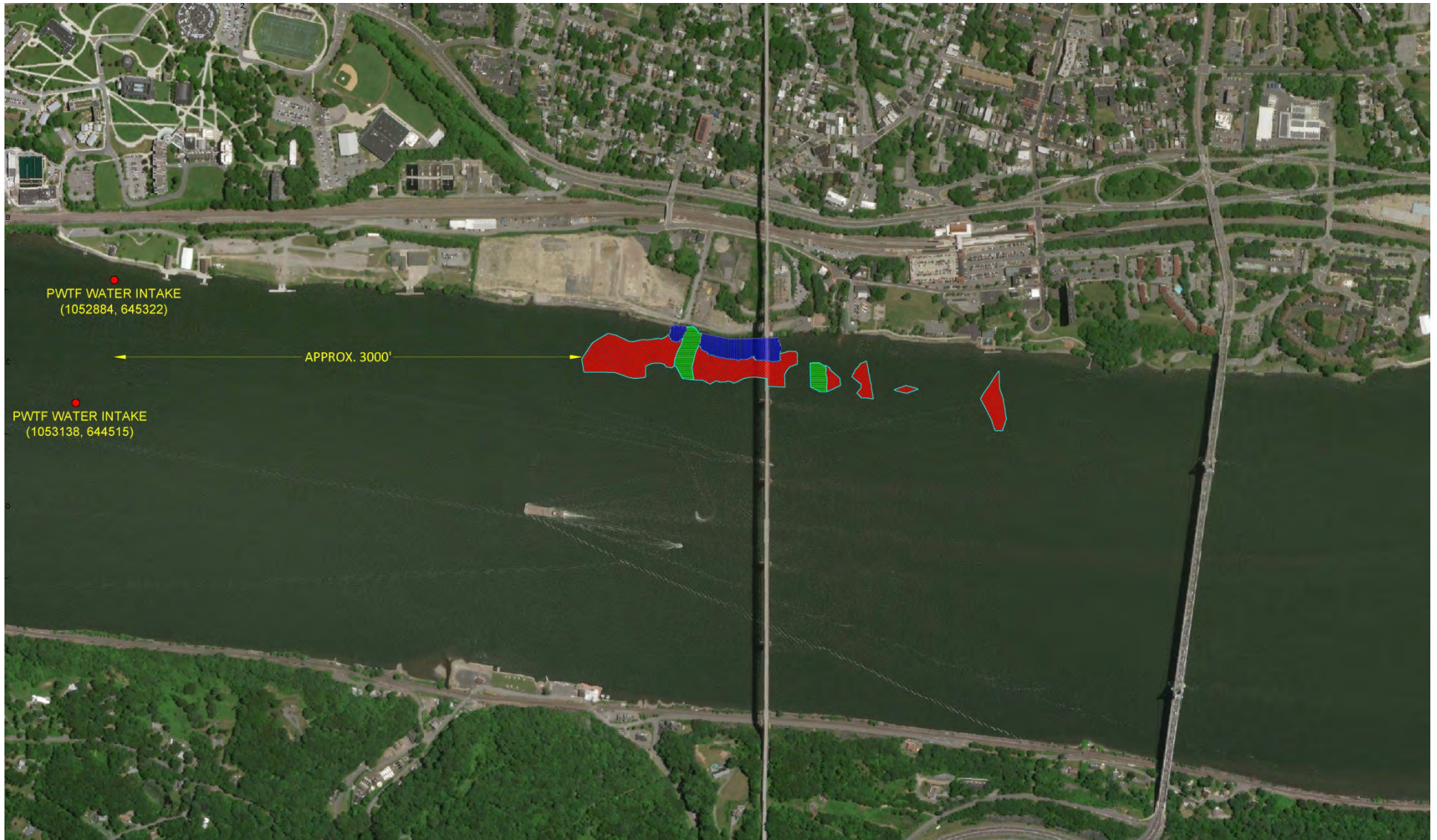
Poughkeepsie Boat House  
November 2018

# Human Health and Ecological Protection

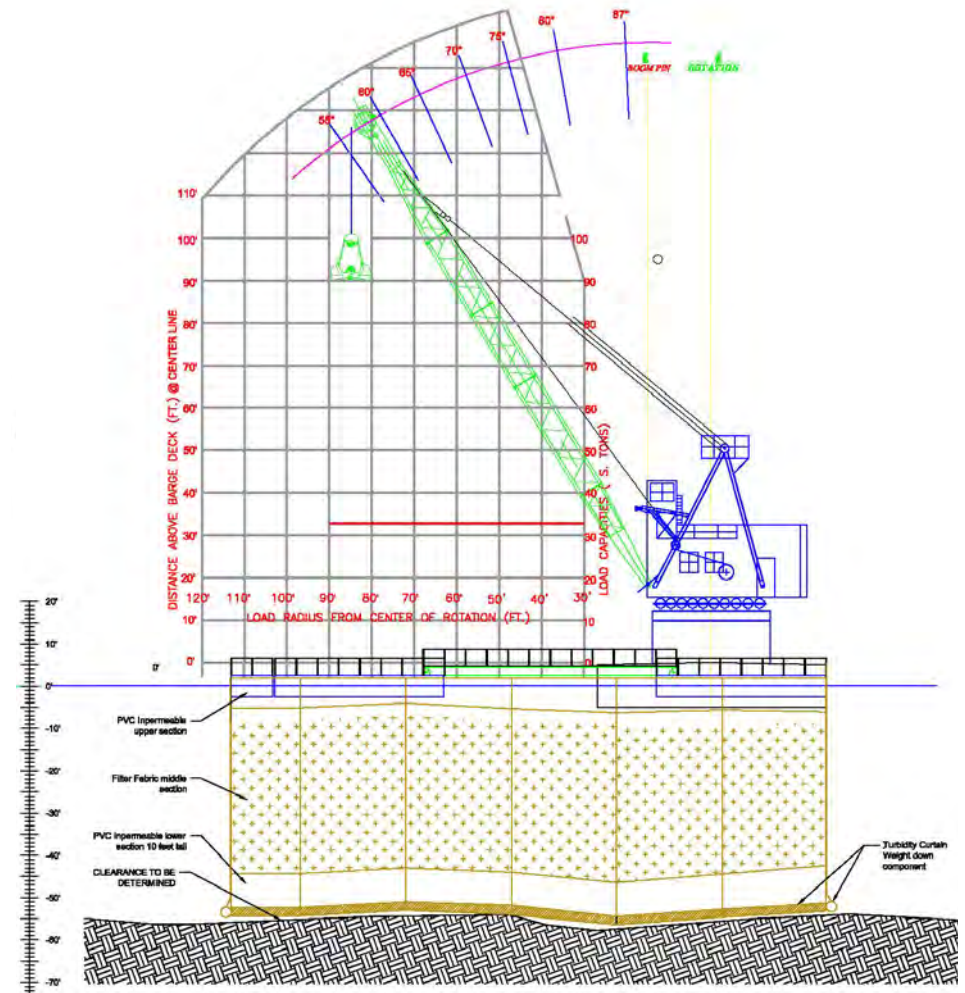
# Perimeter Air Monitoring



# City of Poughkeepsie Water Intake



# Turbidity Containment Cell



# Turbidity Curtains



# Site Construction

# Extent of Work

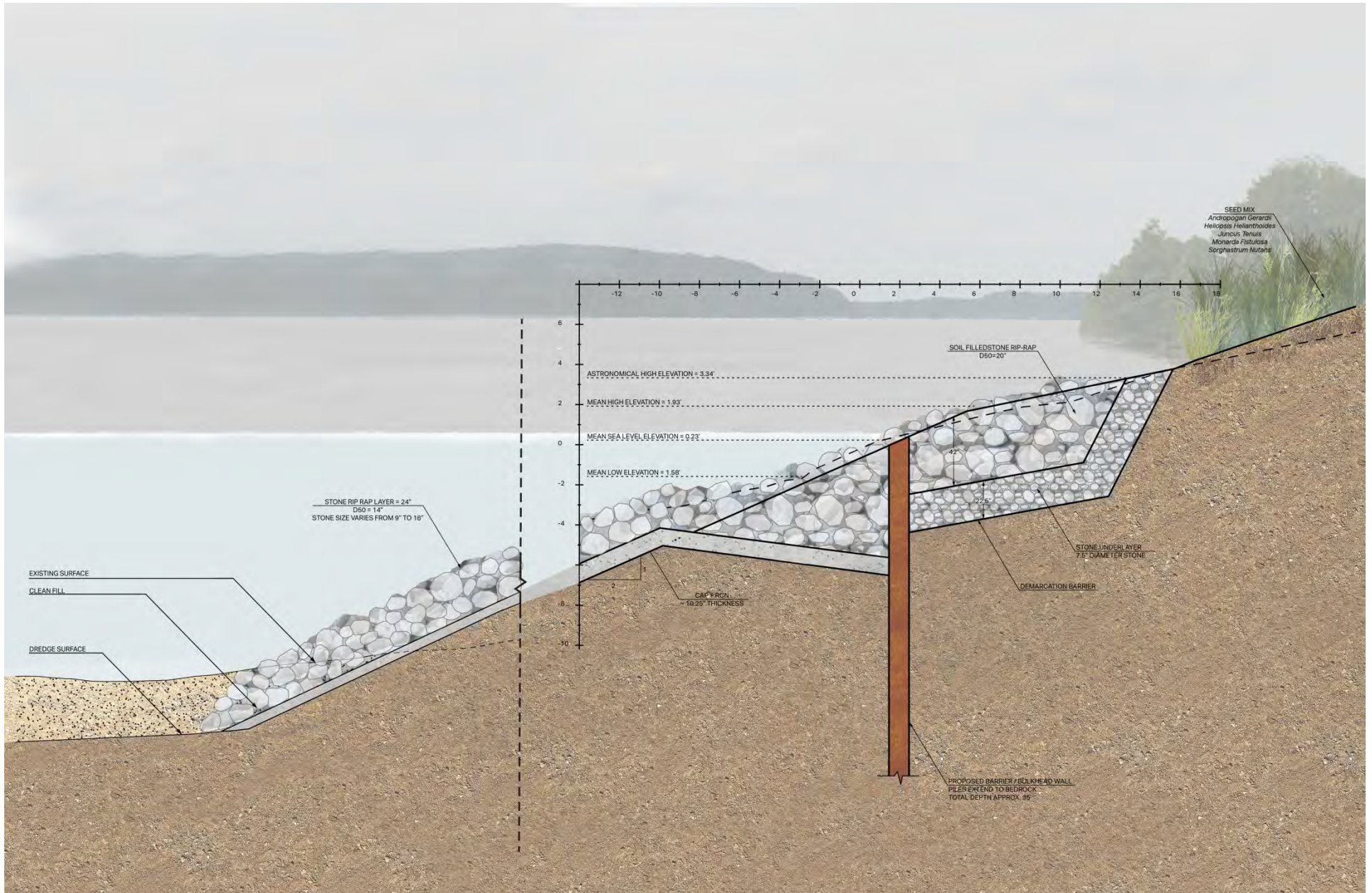




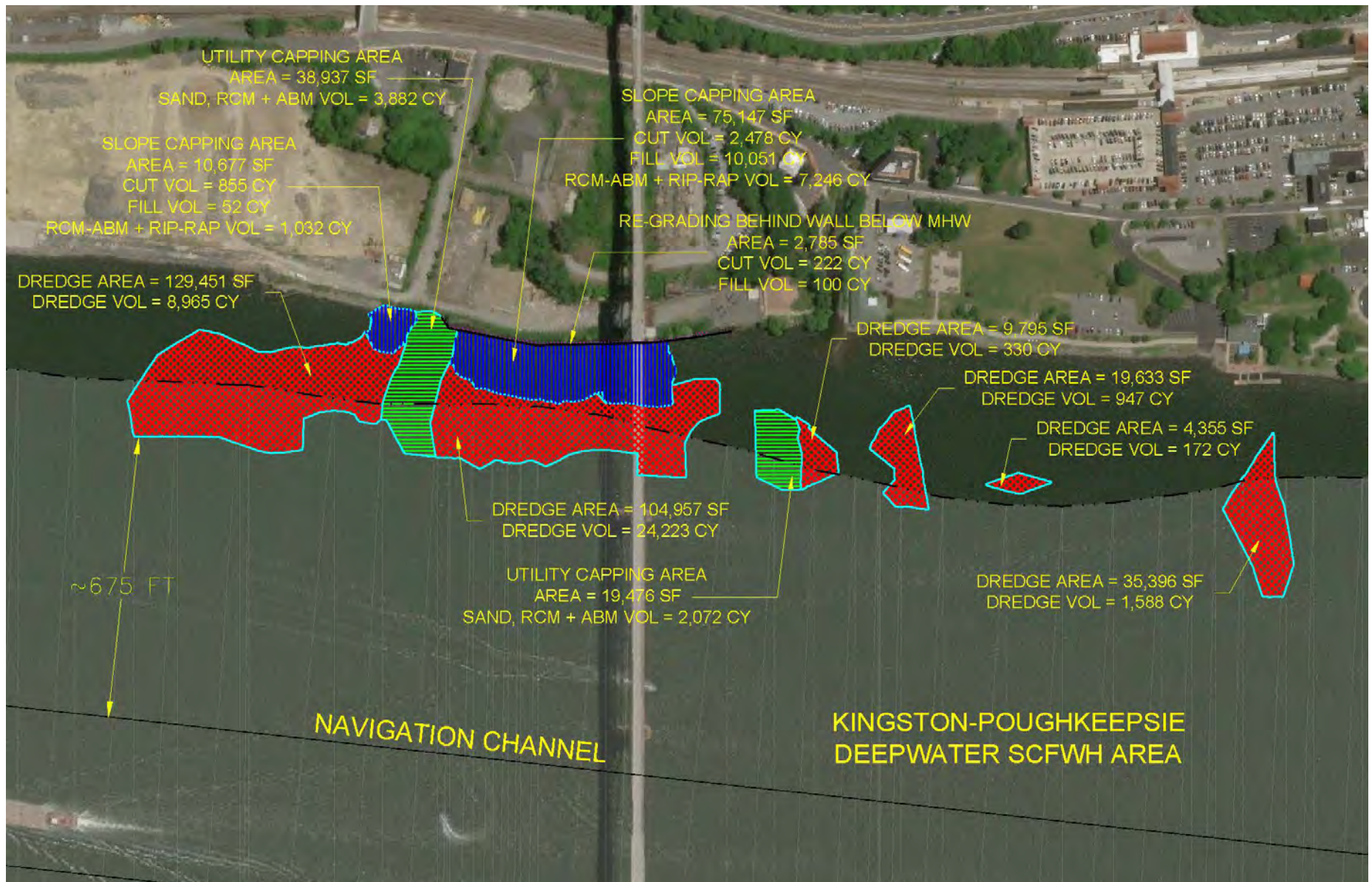
# Sheet Pile Installation and Restoration



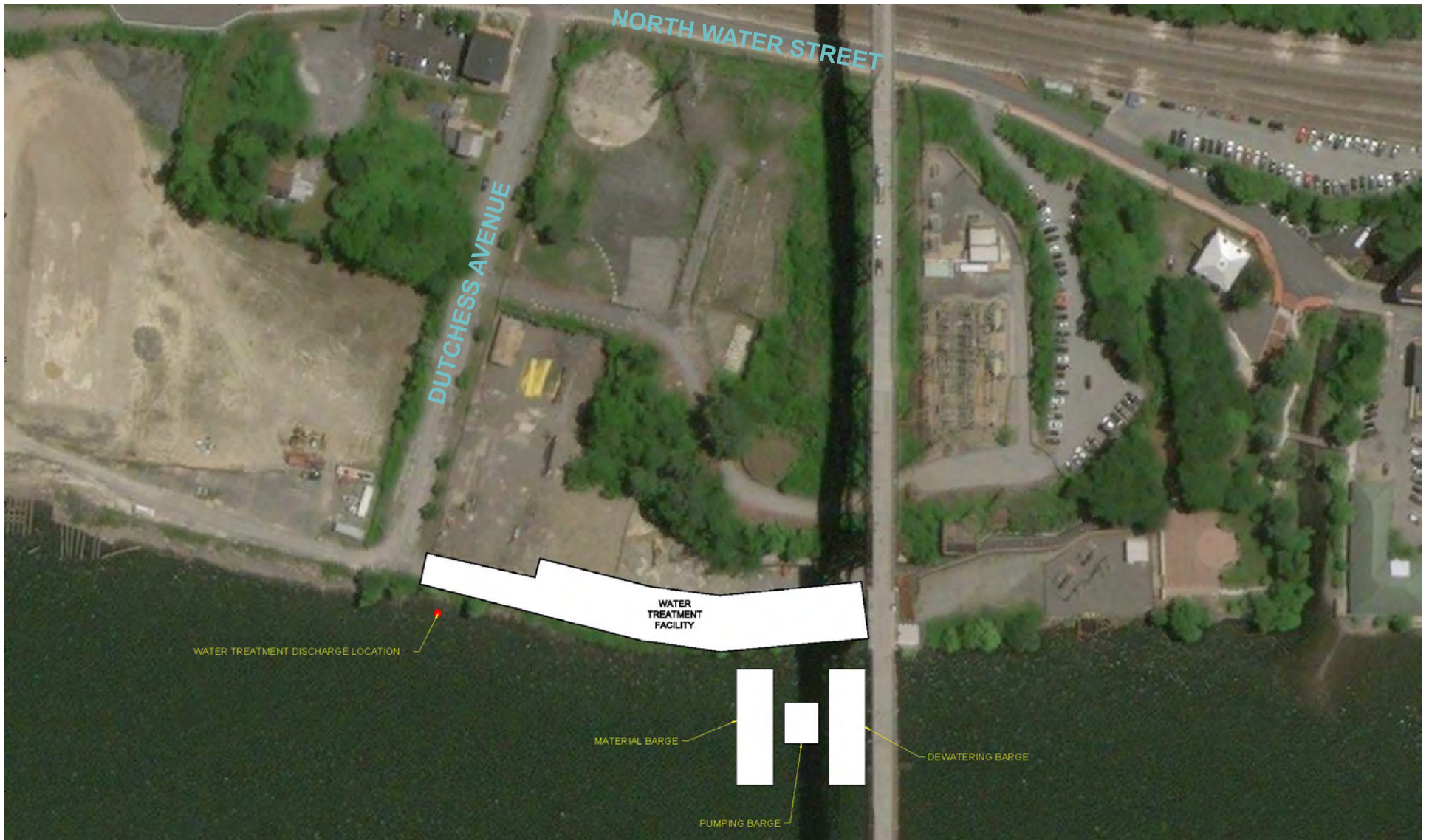
# Cross Section of Remedial Work



# Dredge and Capping

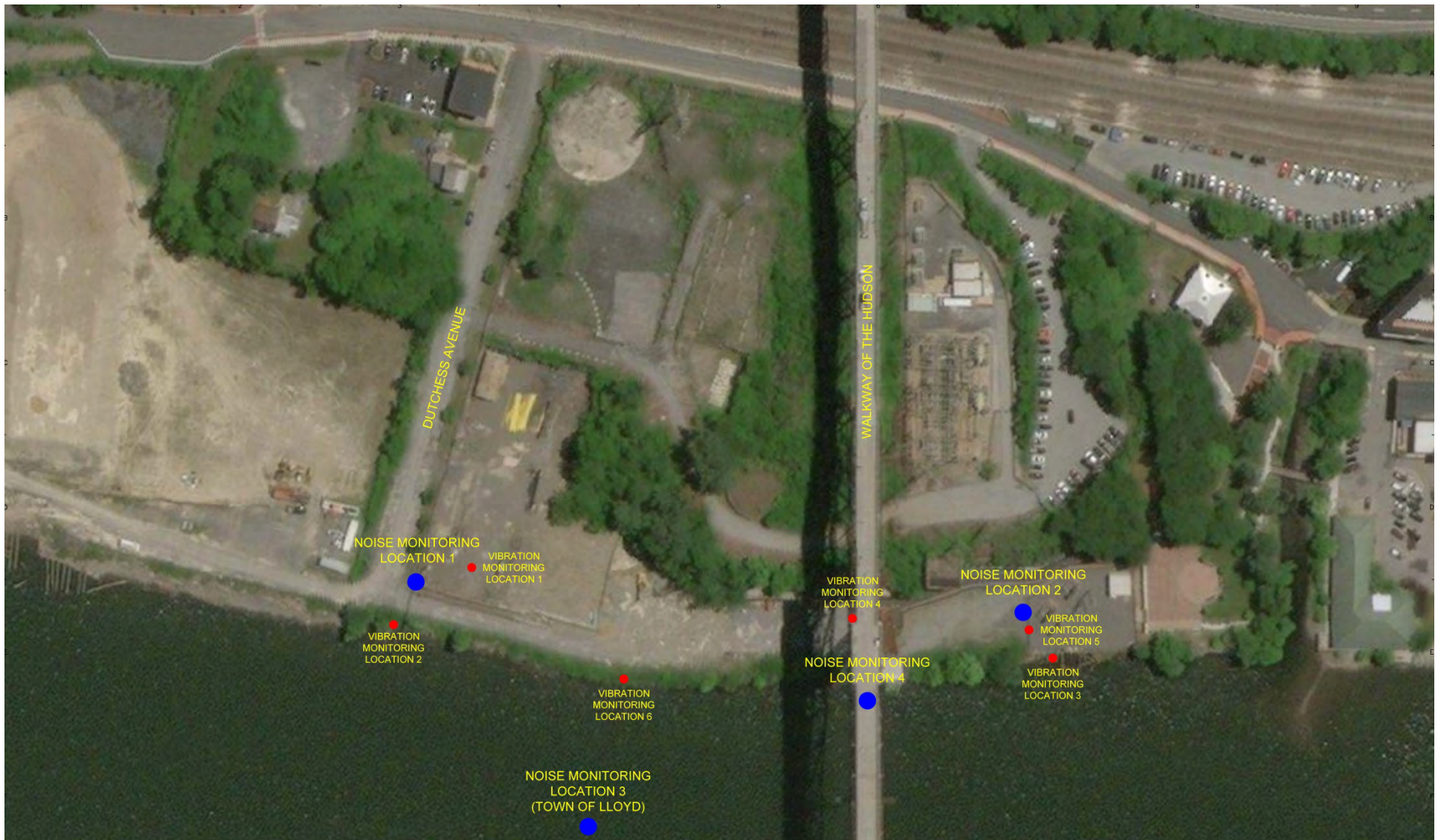


# Dewatering/WTP Locations

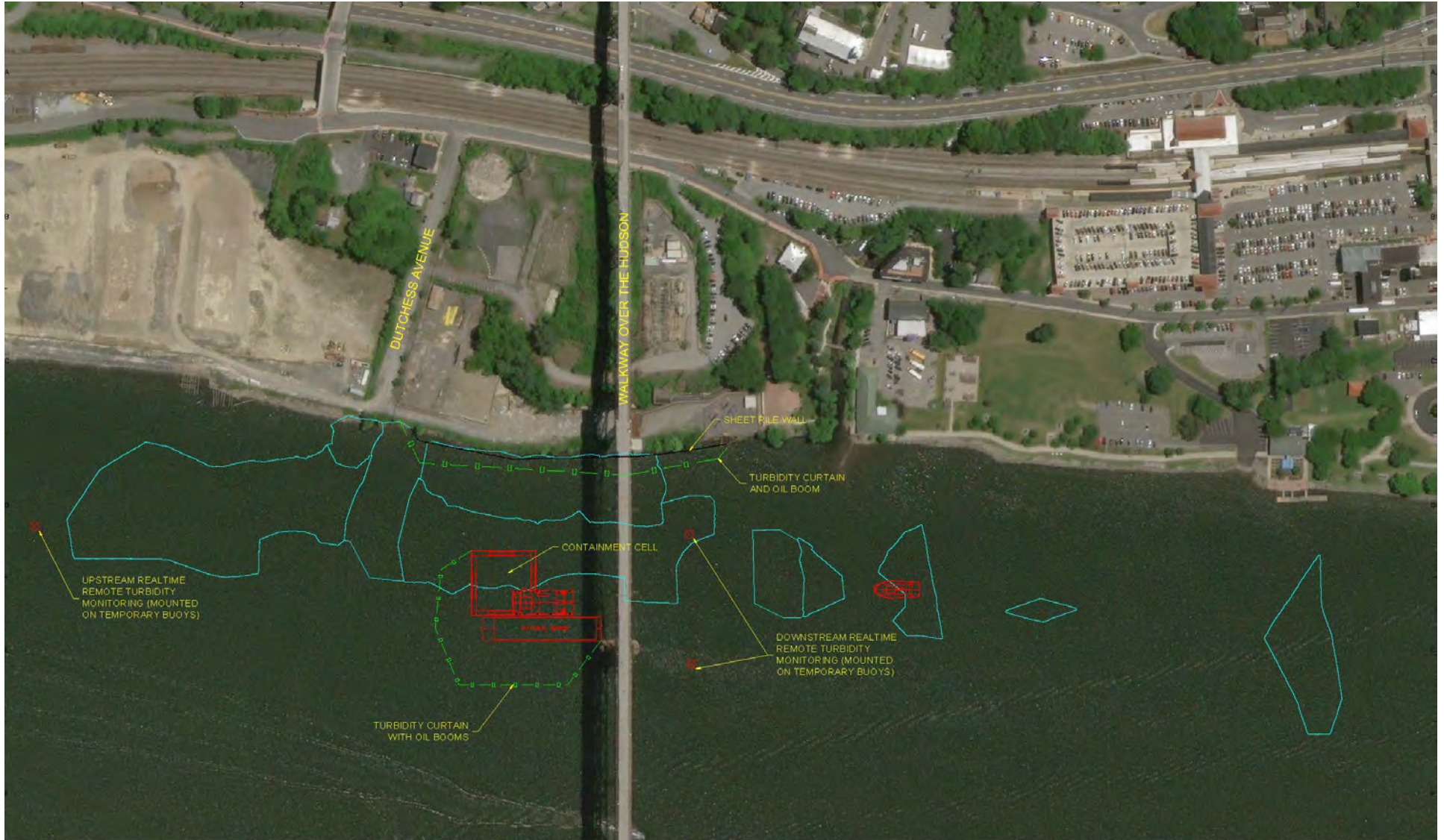


# Monitoring and Control Activities

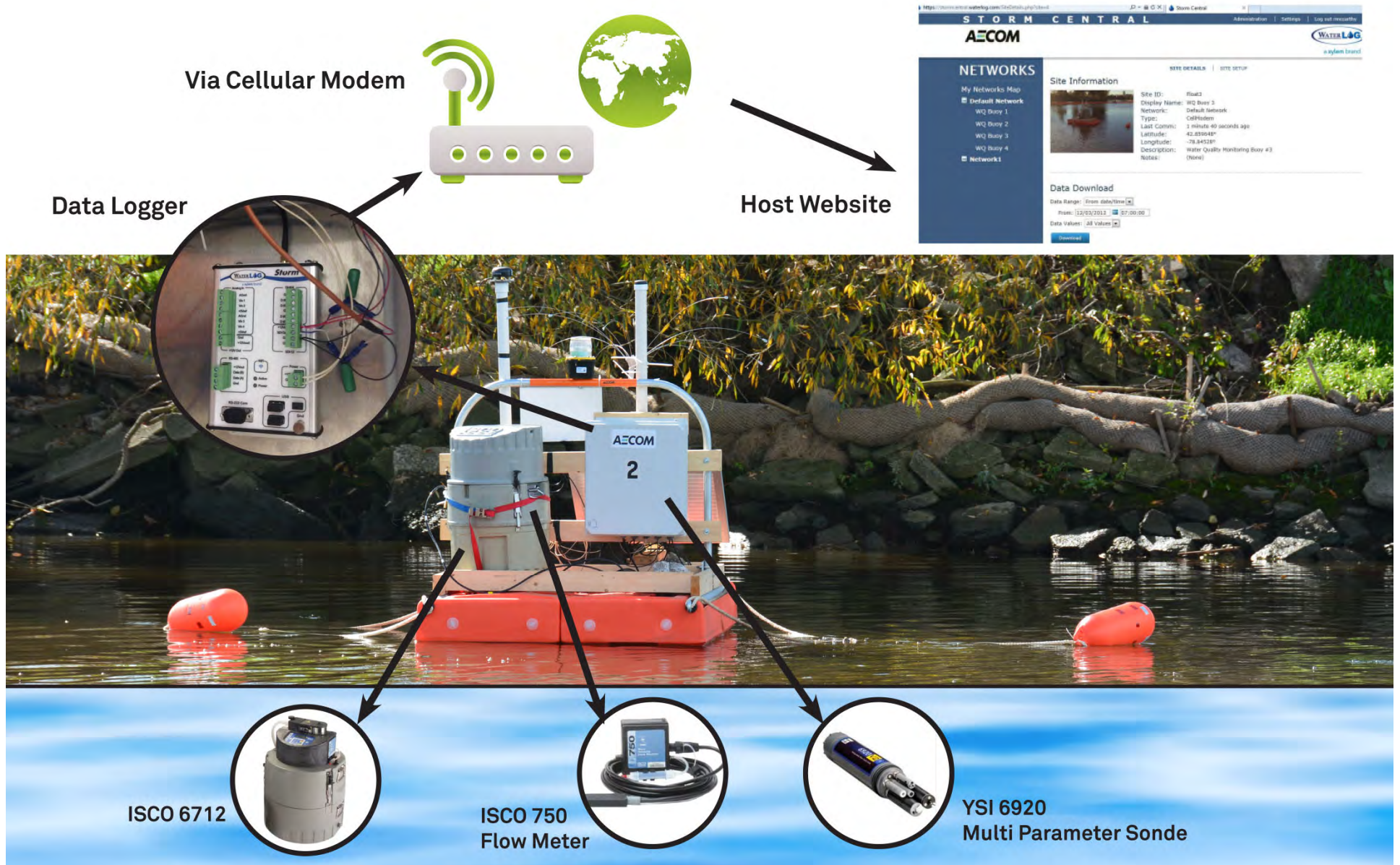
# Noise and Vibration Monitoring Locations



# Water Quality Monitoring



# Turbidity Monitoring Buoys





# Road and Marine Traffic and In-Water Safety Controls

# Navigational Controls



# Trucking Routes



MAP SOURCE: Esri, HERE, Garmin, USGS, Intermap, INCREMENT P, NRCan, Esri Japan, METI, Esri China (Hong Kong), Esri Korea, Esri (Thailand), NGCC, (C) OpenStreetMap contributors, and the GIS User Community

**AECOM**

CENTRAL HUDSON GAS & ELECTRIC  
POUGHKEEPSIE, NY  
95540671  
DATE: 05/19/2018

PROPOSED TRUCK ROUTE  
FROM THE SITE

FIGURE 1



MAP SOURCE: Esri, HERE, Garmin, USGS, Intermap, INCREMENT P, NRCan, Esri Japan, METI, Esri China (Hong Kong), Esri Korea, Esri (Thailand), NGCC, (C) OpenStreetMap contributors, and the GIS User Community

**AECOM**

CENTRAL HUDSON GAS & ELECTRIC  
POUGHKEEPSIE, NY  
95540671  
DATE: 05/19/2018

PROPOSED TRUCK ROUTE  
TO THE SITE

FIGURE 1

# Historical Background/Overview

# Historical Site View



# Historical Site View



# Proposed Remedial Actions



WORK PERFORMED IN SEASON 1



WORK TO BE PERFORMED IN SEASON 2 AND 3