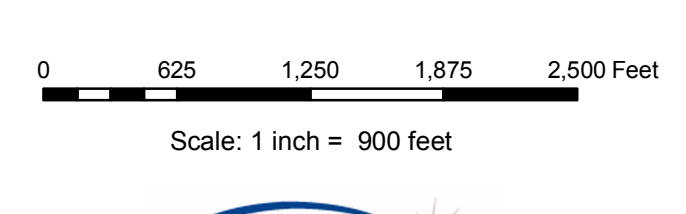
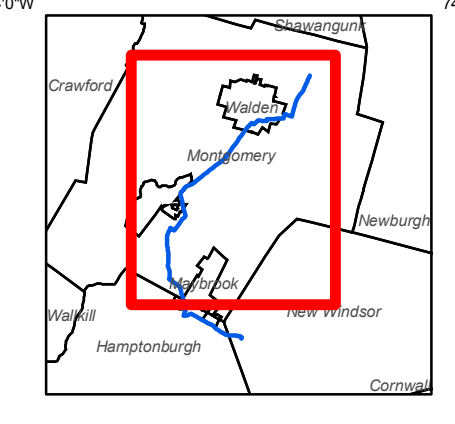


**Central Hudson Gas & Electric  
WM Transmission Line Rebuild Project**  
Figure 5  
Limits of Property Easements  
October 2007



- Legend**
- WM Preferred Route Alignment
  - Right-of-Way Boundary
  - Town of Hamptonburgh
  - Town of Montgomery
  - Town of New Windsor
  - Village of Maybrook
  - Village of Montgomery
  - Village of Walden
- Right-of-Way Parcels**
- Municipality**
- Town of Hamptonburgh
  - Town of Montgomery
  - Town of New Windsor
  - Village of Maybrook
  - Village of Montgomery
  - Village of Walden

